



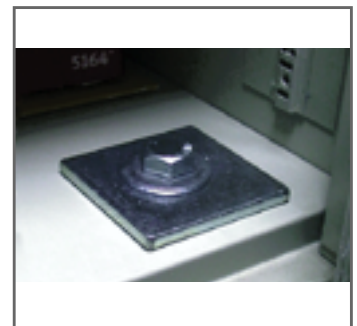
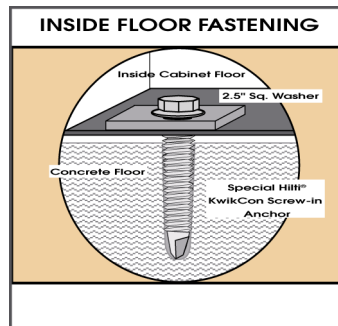
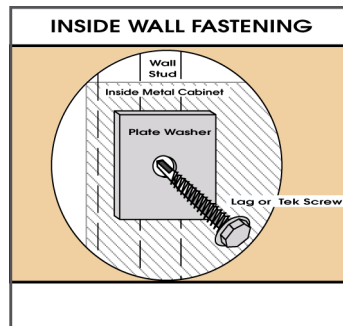
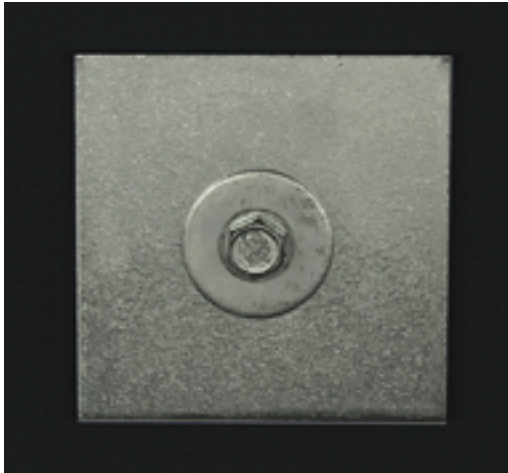
www.worksafetech.com

Internal Plate Washers

**IWFA 233, IWFK 225, IWWK 225, IWWL 225,
IWFA 333, IWFK 325, IWWK 325, IWWL 325,
IWFA 433, IWFK 425, IWWK 425, IWWL 425**

PRODUCT FEATURES

- *Better aesthetics: hidden fastening from inside the item to a wall or floor*
- *Can be used to secure two-piece cabinets or sectional furniture together*
- *For items that are placed flush against the wall*
- *"2-point", "3-point", and "4-point" wall or floor fastening kits available*



Internal Plate Washers provide an aesthetically pleasing method to secure furniture to the wall or floor. When bolting furniture to the studs in a wall or to the floor our internal plate washers enhance the fastener's holding strength. The plates spread the load over a wide area on thin sheet metal backs of file and storage cabinets and protect wood furniture by preventing splintering or the possibility of the furniture pulling through the lag bolt during an earthquake.

Wall: Graded metal tek screws perform best into metal stud walls and wood screws are furnished for wood stud attachment (metal tek screws are preferred when fastening into plywood). Large top-heavy cabinets may require a 2-point fastening at the uppermost point of the inside of the cabinet, and an additional set at or near the expected center of mass. Most standard cabinets require 2-point fastening at or near the top only.

Floor: Hilti® Kwik-Cons™ intrude less into concrete and carpet and are easily removed.

SPECIFICATIONS

Materials: Steel zinc plated washers w/5/16" center hole

Dimensions:

2.5" x 2.5" x 3/16": IWFK 225, IWWK 225, IWWL 225
IWFK 325, IWWK 325, IWWL 325
IWFK 425, IWWK 425, IWWL 425

3" x 3" x 3/16": IWFA 233, IWFA 333, IWFA 433

- IWFA - Floor Kit with concrete anchor
- IWFK - Floor Kit with Hilti® Kwik-Con™ anchor
- IWWK - Wall Kit with Hilti® Kwik-Con™ anchor
- IWWL - Wall Kit with lag/tek screws
- □ 225, 233 - "2-point" Kit
- □ 325, 333 - "3-point" Kit
- □ 425, 433 - "4-point" Kit